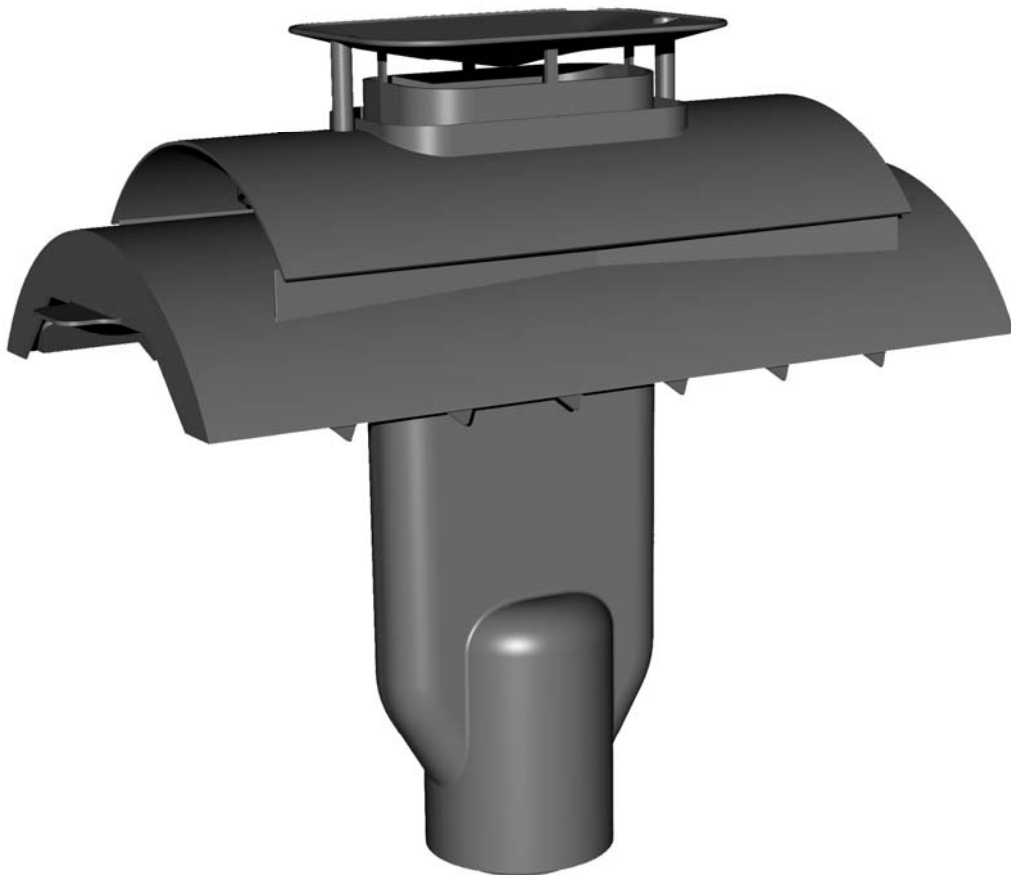




COMBI RIDGE CONCENTRIC RIDGE TERMINAL FOR USE WITH CONDENSING BOILERS ONLY

This product replaces a single 450mm ridge tile and connects to a concentric Ø60/100mm flue system. Product must be approved for use with the designated condensing boiler – Please refer to proposed boiler manufacturer for more details.

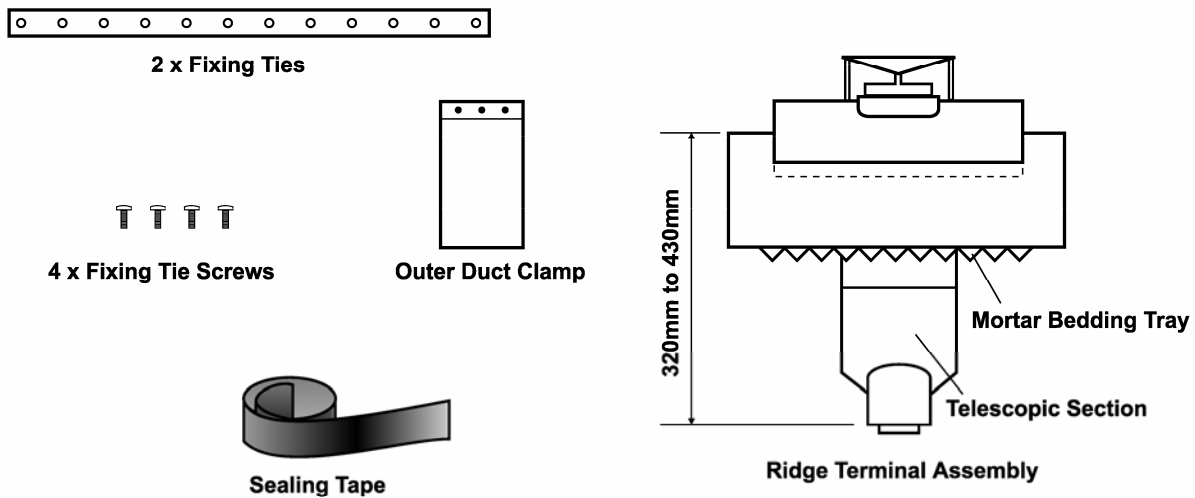


Go to www.interactiveholding.com for more information. Email sales@interactive-uk.com



COMBI RIDGE

INSTALLATION GUIDELINES FOR COMBI RIDGE TERMINAL ASSEMBLY (FOR USE WITH APPROVED CONDENSING BOILERS ONLY)



KIT CONTENTS

SPECIAL NOTES

This flue terminal is designed predominantly for use in new build situations where the roof construction allows for ridge penetration.

In retrofit installations roofing materials will need to be removed/replaced and the roof structure may require alterations to accommodate the passage of the flue system. Any work of this nature should be carried out by a competent person and the integrity of the roof structure should never be compromised.

The Ridge Flue Terminal replaces a 450mm ridge tile. The profile and colour choice allow it to blend with most common ridge tiles. Positioning at the ridge should be in accordance with relevant Building Regulations and British Standards. Ensure the roof is prepared to allow for the throat section of the terminal (50mm) to pass directly into the roof space and cut roofing felt/boarding as necessary. A clearance of 25mm from combustible materials must be maintained.

NOTE: Once installed the terminal design will allow rain and condense to be discharged into the flue pipe. IT IS ESSENTIAL TO CONNECT THE COMBI RIDGE TERMINAL TO A COMPLETED FLUE SYSTEM CONNECTED TO THE BOILER. IF LEFT UNCONNECTED, PROVISION SHOULD BE MADE TO COLLECT LIQUID FROM THE TERMINAL AND TO DRAIN IT AWAY AS NECESSARY.

NEW BUILD – STANDARD MORTAR JOINT

The use of FLEXIM® flexible mortar is recommended around the Combi Ridge Terminal

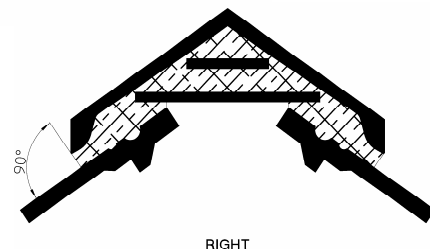
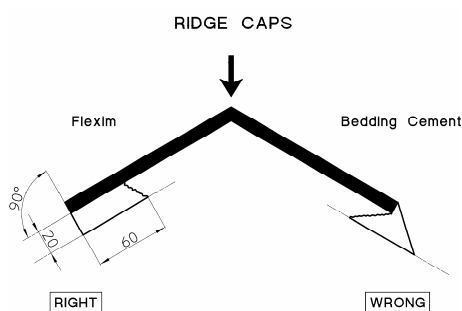
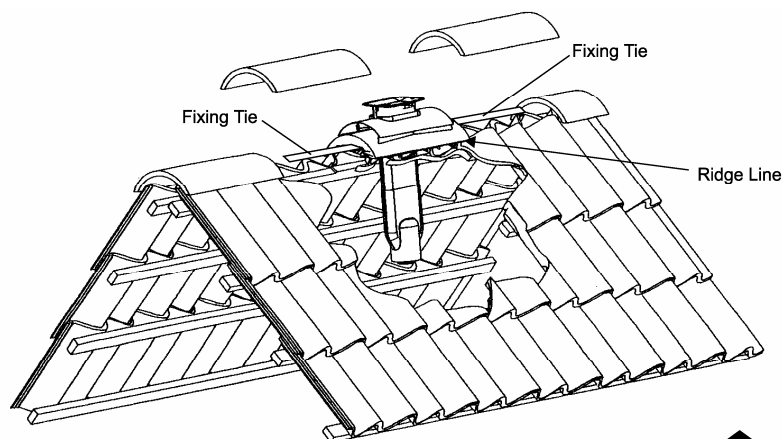
1. At nominated position between the rafter spacing, cut roofing felt/boarding to allow for penetration of rectangular throat section of terminal.
2. Remove telescopic connection from terminal and ensure it is safely stored.
3. Test fit Combi Ridge to determine how it sits in relation to adjacent roofing materials.

NOTE: It may be necessary to trim “V” sections from mortar under tray to get the best fit with certain roofing materials.

4. Secure Fixing Tie to underside of Combi Ridge with screws provided.
5. Lay Flexim® or cement mortar bed at the ridge line where Combi Ridge Terminal meets the tiles/slates. Firmly push terminal into position allowing mortar to penetrate the under tray. Always ensure joints are watertight and Flexim trimmed at 90 degrees to adjacent roofing material.
6. Secure strapping to roof structure.
7. Complete the installation by using Flexim® or cement mortar to joint area between Ridge Flue Terminal and adjacent ridge tiles. Use dentil slips and finishing flexible mastic as necessary.
8. Complete ridge tile installation making good all mortar joints and ensuring Ridge Flue Terminal is clean and free from blockages.
9. From inside the roof, locate the previously removed telescopic section over the throat of the terminal. Lubricate the seal as necessary (No mineral greases).

NOTE: ENSURE THERE IS ADEQUATE ENGAGEMENT OF THIS SECTION IE AT LEAST 50mm (DENOTED BY TEXTURED ZONE).

10. Connect the flue assembly to the telescopic section of the Combi Ridge Terminal using the clamp supplied. Seal the telescopic joint with the tape supplied.



* Apply FLEXIM continuously along edges, with solid bedding at butt joints as shown.

* To reduce excess use of flexim in butt joints use pieces of broken tiles / slates.

* Keep the joints as tight as possible.

NEW BUILD – DRY FIX SYSTEMS

The use of FLEXIM® flexible mortar is recommended around the Combi Ridge Terminal

There are many different proprietary dry fix and ventilated ridge systems on the market and the end profile of the Combi Ridge Terminal makes it suitable for use with most forms of universal ridge tile. Tile manufacturers have different connections and ventilation sections, so typical pointers are given to assist with detailing of the roof. Blanking strips and other fittings are available from roofing manufacturers to allow for the use of ridge terminals.

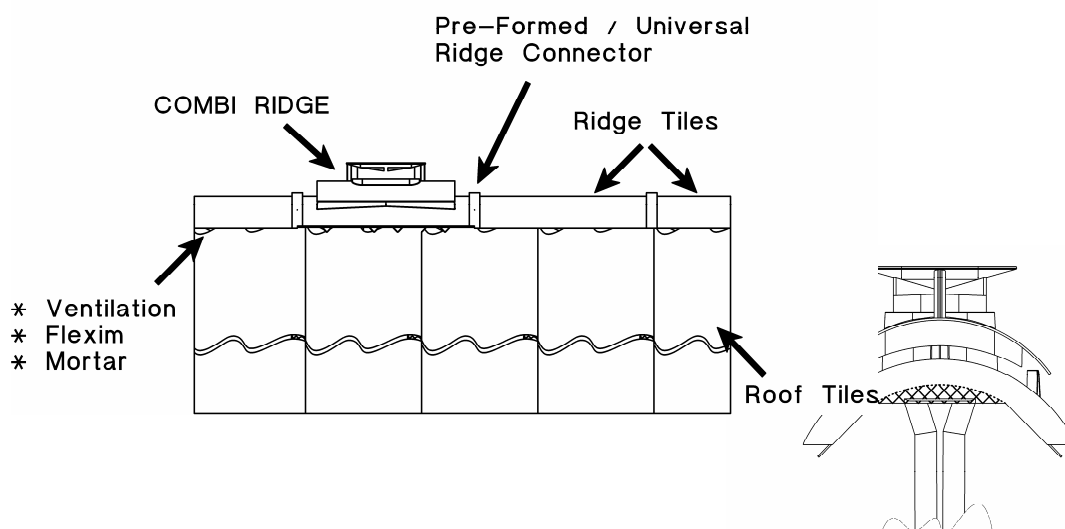
1. Where pre-formed connections are used to mechanically fix the ridge tiles, it will be necessary to determine by "offering up" the end profile of terminal if these are compatible.
2. Trim the end profile of Combi Ridge to suit the connector profile. Place a connector onto both ends of the terminal and install at nominated position between rafters.
3. Cut roofing felt/boarding to allow for penetration of rectangular throat section of terminal. Nail or screw ridge connectors into place as recommended, ensuring the Combi Ridge Terminal is adequately secured and all necessary clearances maintained.

Note: Removal of the mortar under tray will be necessary if ventilation sections are used at the intersection of ridge tile and roof slope.

4. Always ensure joints are fully sealed and the integrity of the roofing covering is maintained.

If the Combi Ridge Terminal is not compatible with the ridge tile connectors supplied, securely fix the terminal to the roof structure using 2No fixing ties and apply "shoulders" of FLEXIM® flexible mortar to either side of the unit. Adjacent ridge tiles can then be bedded into the flexible mortar or the adjacent roofing connectors can be adapted to suit the situation.

Always ensure joints are fully sealed and the integrity of the roofing system is maintained.



Trim profile as necessary
(hatched area) over dotted line.